



BIG BASIN REDWOODS STATE PARK CAMPGROUND RULES AND INFORMATION

Please follow these rules and regulations during your visit and help preserve the qualities that make Big Basin a special place.

OCCUPANCY: Eight people are allowed per family drive-in or walk-in site.

VEHICLES must register at Park Headquarters and display a valid receipt on the windshield prior to parking. Vehicles must park in their designated campsite space only. Standard tent or RV drive-in sites allow parking for one vehicle and one extra vehicle. Trailers are counted as a vehicle. Walk-in tent sites allow parking for one vehicle only in an assigned parking lot space. Fees are due for all extra vehicles, except trailers. No parking is allowed along campground roads. Extra or over-size vehicles must park in the lots adjacent to Park Headquarters or at Jay Camp.

QUIET TIME hours are 10 p.m. to 6 a.m.—radios off, voices lowered to a whisper. Voices carry at night and sound seems to be magnified in the still of the forest.

NOISE: Radios and other sound-producing devices must not be audible beyond your immediate campsite, regardless of the time of day. Generators may operate from 10 a.m. to 8 p.m. only.

FIRES: Fires are allowed only in the metal fire rings or stoves. Do not build fires outside of fire rings. Fires must be completely out when not attended. All fireworks are prohibited.

PAY SHOWERS are located in the campgrounds. Change is available from the Blooms Creek Camp Host and at Park Headquarters. Cost is 25 cents for two minutes.

PLANTS, FLOWERS, mushrooms, natural scenery and animals are protected by law from human disturbance of any kind. Nails, axes, knives, and other sharp objects may not be put into any trees, downed logs, campsite tables, and parking barriers. Hammocks may not be hung from the trees.

DOGS must be on a leash no longer than six feet and under control at all times. They are not permitted on any trails or fire roads, must be confined to a vehicle or tent from 10 p.m. to 6 a.m., and may not be left unattended at any time.

BICYCLES are restricted to the paved roads and fire roads. They are not allowed on any of the trails. Riders under 18 must wear a helmet.

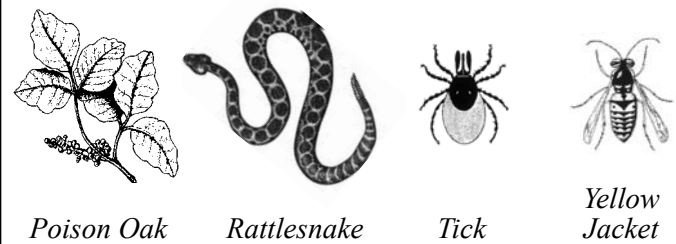
WOOD COLLECTING, including leaves and twigs, is not allowed. This material decays and assists the growth of live trees and other plants. Firewood is sold at the park year-round.

YOU ARE REQUIRED TO SECURE YOUR FOOD, except when eating, to protect yourself and park wildlife. Raccoons, birds, and squirrels are very aggressive and will steal food that has been left out. Lock food inside a vehicle. It is not secure in tents, picnic table storage boxes, or ice chests. Dispose of trash and food waste into the campground dumpsters immediately to keep wildlife from consuming or spreading them around. Please recycle your plastic, glass, and aluminum.

GAMES must be safe and not damage park resources. No bats, hardballs, airsoft weapons, bb-guns, paintball guns, or horseshoes. In doubt, please ask staff.

Check-in time is 2 p.m. Check-out time is 12 noon on your last day.

Warning: Be aware of the presence of poison oak, rattlesnakes, ticks and yellow jackets.



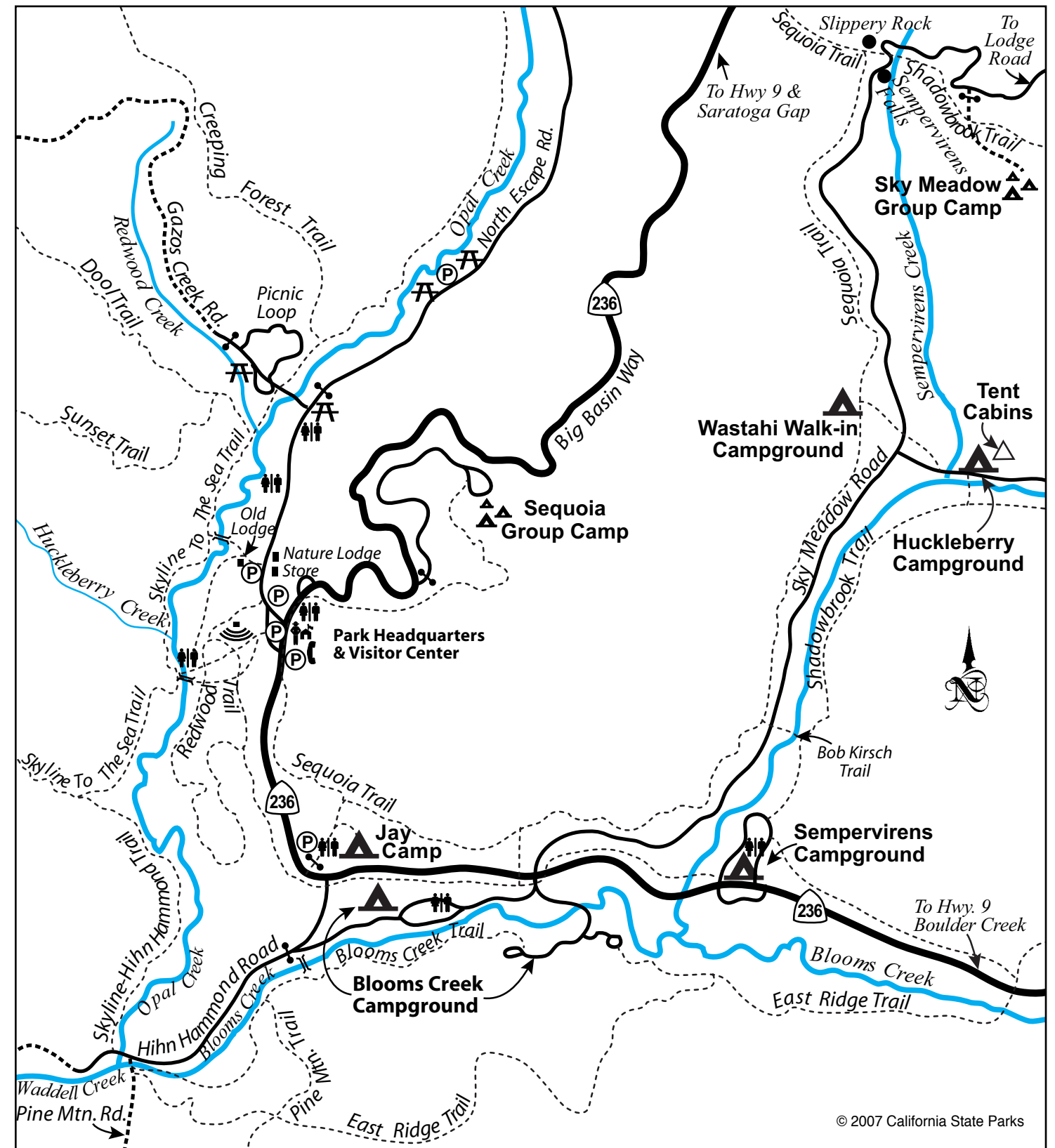
Discover the many states of California.™



Big Basin Redwoods State Park

21600 Big Basin Way • Boulder Creek, California 95006 • www.parks.ca.gov
Park Headquarters/Trail Camp Reservations (831) 338-8861 • Recorded Information (831) 338-8860

Big Basin is California's oldest State Park, established in 1902. Camping and tent cabin reservations are essential during peak season and may be made year round by calling (800) 444-PARK or visiting www.reserveamerica.com. Unreserved campsites and tent cabins will be sold on a first-come, first-served basis. Tent cabins are concession operated.



© 2007 California State Parks



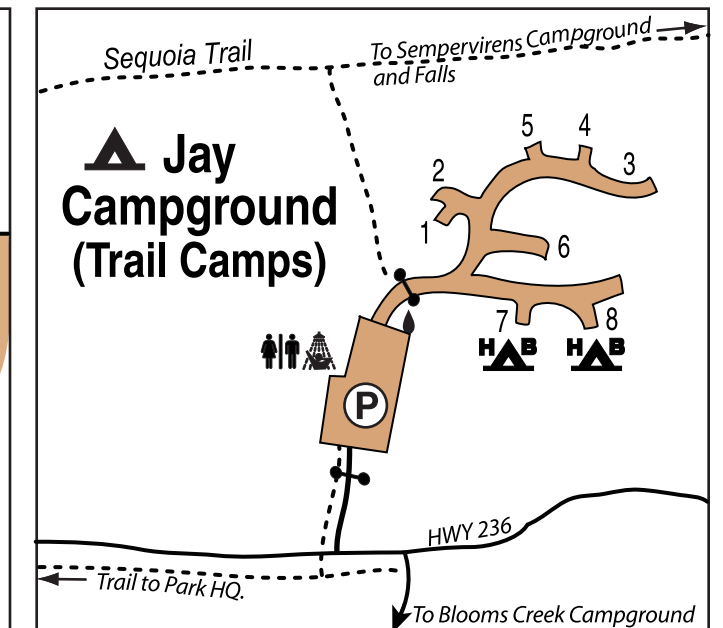
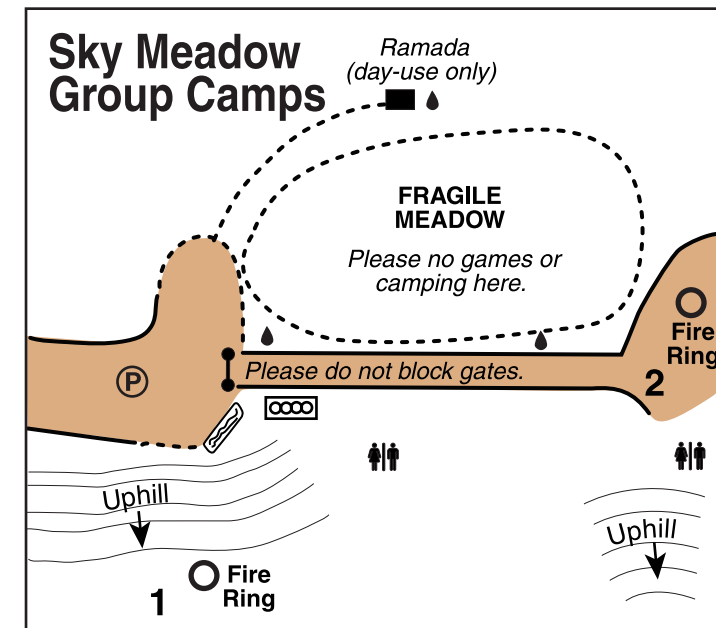
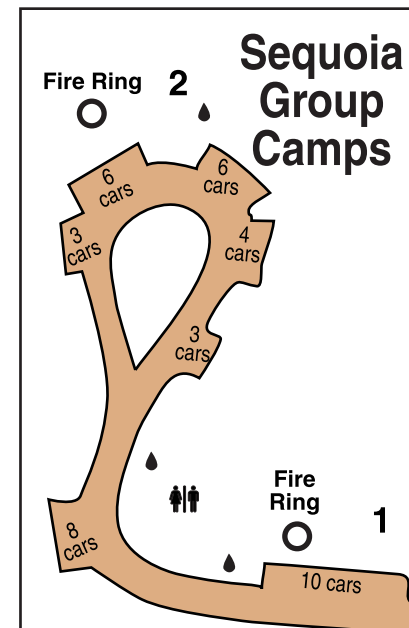
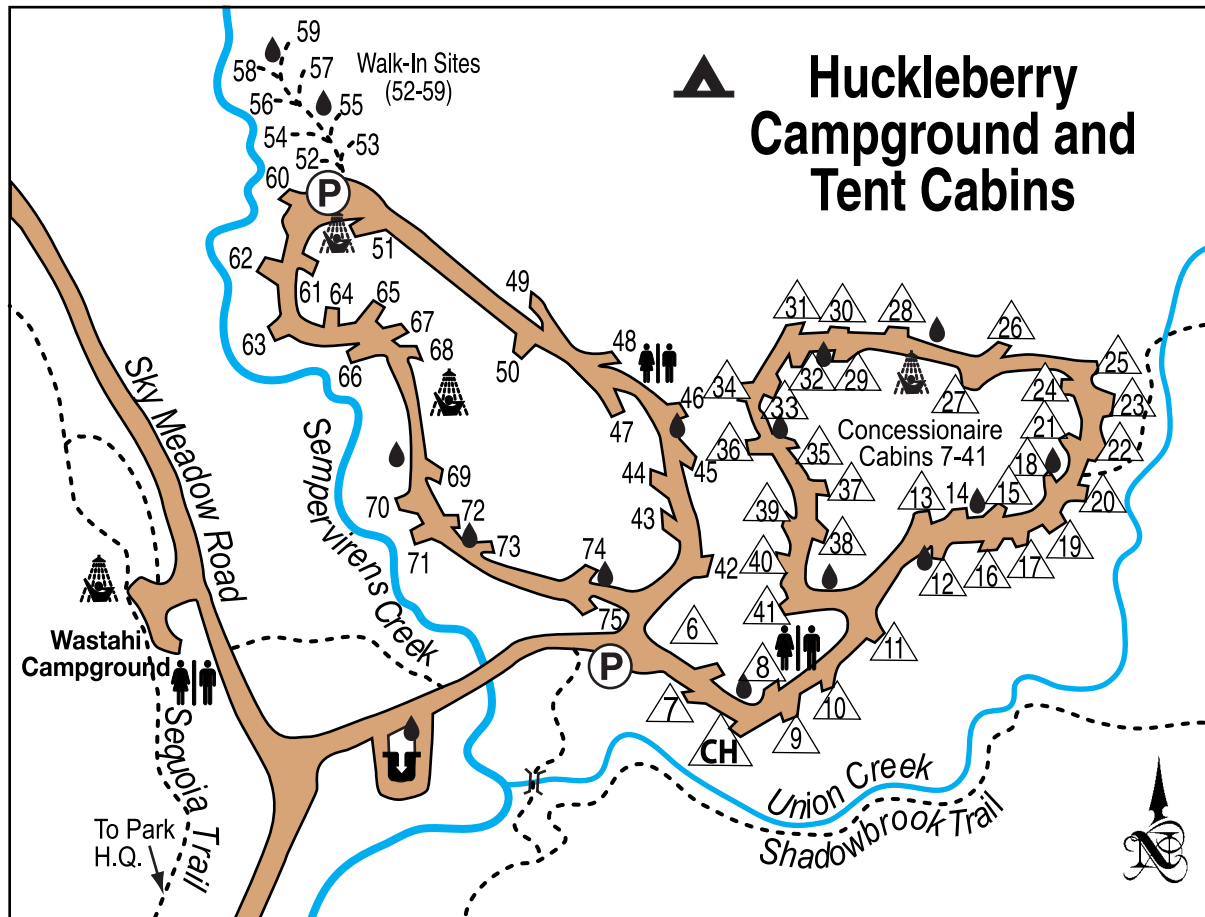
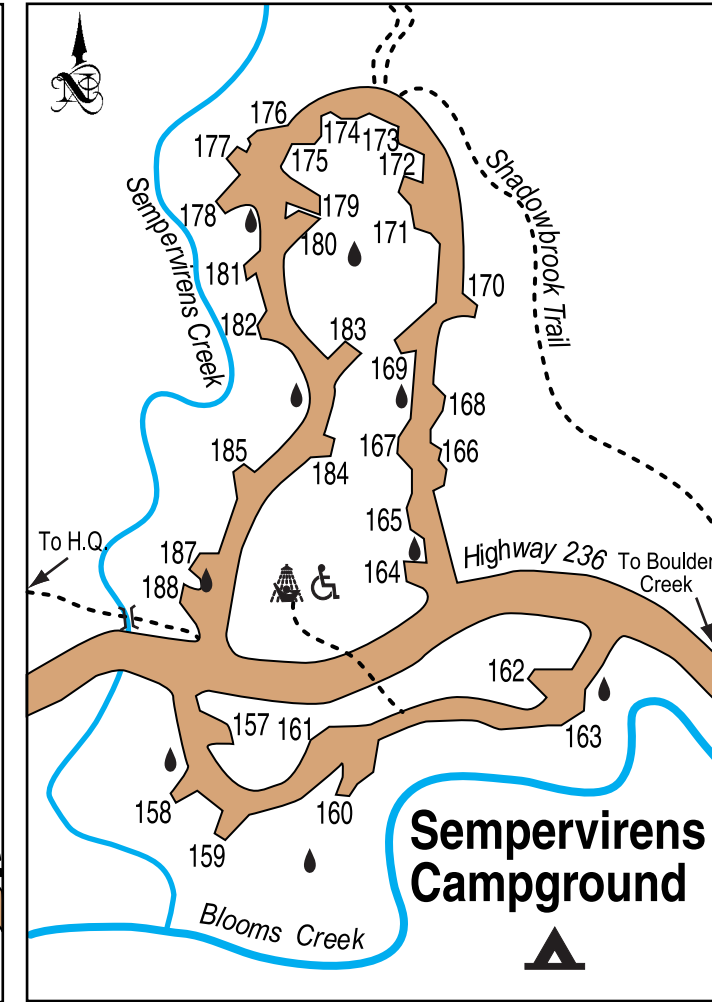
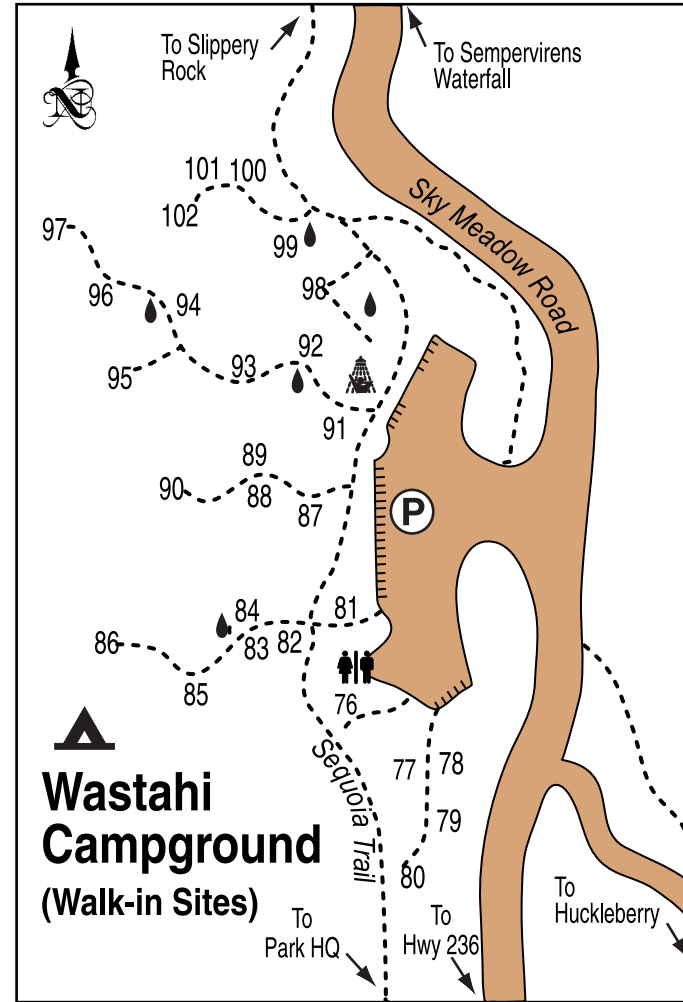
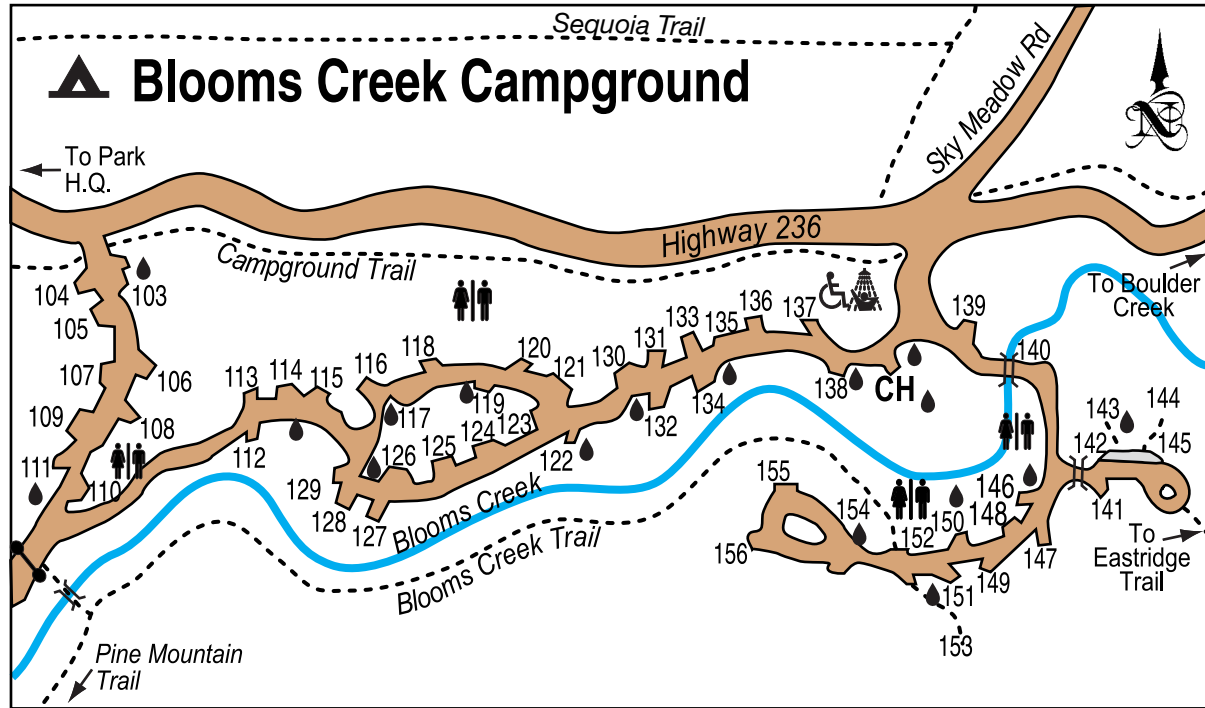
Big Basin Redwoods State Park Campgrounds

Your space #: _____

In case of emergency call **9-1-1**.

LEGEND

- Accessible Feature
- Bridge
- Campfire Center
- Campground
- Camp Host
- Concession Host
- Group Campground
- Hike/Bike Campground
- Locked Gate
- Parking
- Picnic
- Ranger Station
- Restrooms
- Restrooms with Showers
- RV Sanitation Station
- Tent Cabin Sites
- Water
- Creek
- Road
- Trail



Maps not to scale.